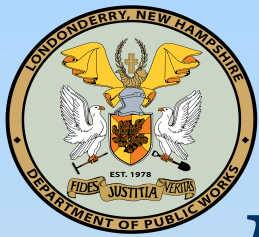


Welcome!!!
Budget FY-2027



Dave Wholley
Director of Public Works

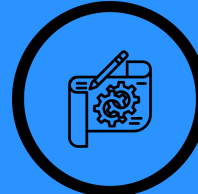


Londonderry Department of Public Works

Comprises 6 Divisions



Highway



Engineering



Fleet



Solid Waste

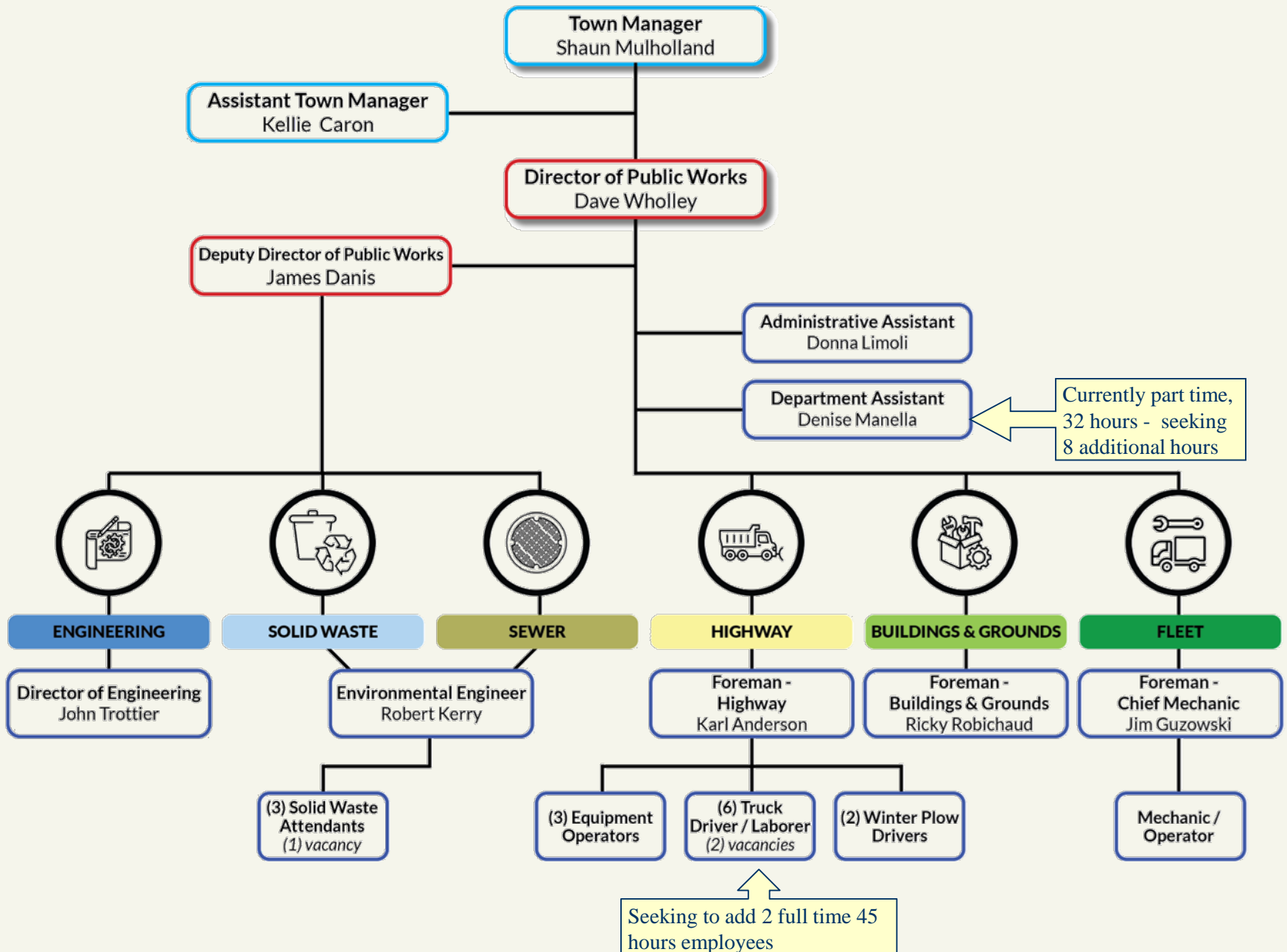


Buildings & Grounds



Sewer

Organizational Chart – Department of Public Works





Solid Waste Division Services Provided

- ◆ Curbside collection of household trash & single stream recycling
- ◆ Curbside trash/recycle container purchases
- ◆ Seasonal Drop Off Center open April thru November (Saturdays 7:30 am – 3:30 pm and Wednesdays 3:00 pm – 7:00 pm until early September)
- ◆ Household Hazardous Waste collection
November & May – Collaborate with Derry
- ◆ Medical Sharps Disposal, located in the front lobby of Police Station
- ◆ Waste Oil Collection – refer residents to O'Reilly Auto Parts or Advanced Auto Parts during their normal business hours
- ◆ Support for Beautify Londonderry and other voluntary litter clean up activities

Historical Trends - Since current curbside collection contract began in July of 2016

- ◆ 697 new single-family residences have been added by the end of FY-25 (June 2025)
- ◆ 332 residences in multi-family complexes requiring dumpster service have been added during this time
- ◆ Expect new single-family residences to grow to approx. 800 by end of FY-26 (June 2026)
- ◆ Expect new single-family residences to grow to over 875 by the end of FY-27 (June 2027)
- ◆ Annual trash tonnage has increase by 750 tons to approx. 8,950 tons at the end of FY-25 (June 2025)
- ◆ Annual recycle tonnage has reduced slightly at approx. 2,350 tons at the end of FY-25 (June 2025) (Material is getting lighter, however it appears volume is steady or increasing)

Scope of curbside trash and recycling services

- ◆ Most visible service – Stops made at every residence in Town once every week, and twice every other week.
- ◆ Current contract, started in 2016, is the largest scope of trash and recycling services ever performed by a contractor in Town.
- ◆ Over 9,000 65-gal. Trash Carts and over 9,000 95-gal. Recycle Carts
- ◆ Over 18,000 Carts deployed in Town
- ◆ Approx. 13,500 Cart collections each week
- ◆ Municipal and Schools - Over 165 Dumpsters and Carts emptied each week
- ◆ Condos and Apartment Complexes - Over 145 Dumpsters and Carts emptied each week
- ◆ Cart Collection takes 3 trucks to run 5 daily routes every week (07:00)
- ◆ 1 additional truck runs throughout the week to empty Dumpsters
- ◆ Additional WM staff assigned to Deliveries, Maintenance, Repairs, Replacements, Swap outs, Storage of Carts

Cost of curbside trash and recycling services

- ◆ FY-25 cost per household is \$17.00/month (\$3.97/week)
- ◆ FY-26 cost per household is \$18.11/month (\$4.18/week)
- ◆ FY-27 Trash tonnage cost - \$105/ton
- ◆ FY-27 Recycle tonnage cost - \$100/ton
- ◆ FY-27 Projected cost per household is \$20.91/month (\$4.83/week)
- ◆ “Why not stop recycling collection, throw it all in the trash?”, Because we would still need the same number of trucks collecting at the curbside

Drop Off Center Service Details – Seasonal - open April – November

Items collected/process methods – this facility is available to Town Residents only.

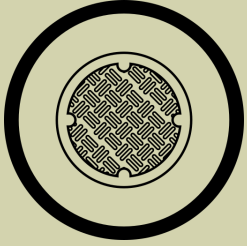
Material	Resident Pays Fee?	Destination	Town Pays Fee to Destination
Construction Debris	Yes	No Commodity Value – to landfill	Yes
Bulk Waste Items	Yes	No Commodity Value – to landfill	Yes
Electronics	Yes	Recycled	Yes
Single Stream Recycling and Cardboard	No	Recycled	Yes
Universal Waste – Fluorescent Bulbs	No	Recycled	Yes
Universal Waste – Rechargeable & Lithium Batteries	No	Recycled	Yes
Scrap Metal	Yes	Typical Commodity Value – Recycled	Fee typically offset by positive Commodity Value
Propane Tanks	Yes	Recycled	Yes
Tires	No, 4 with care registration (Yes, if over 4 per year)	Recycled	Yes
Auto Batteries	No	Recycled	Yes
Yard Waste	No	Recycled	No (Typically)
Brush	No	Recycled	Yes

• Fees paid help offset, but do not cover total operation costs

• Estimated required FY-27 funding is \$214,000

FY-27 Goals:

- ◆ Maintain highly reliable, cost effective trash and recycling collection services
- ◆ Optimize cart inventory and maintenance and/or replacement procedures
- ◆ Optimize customer notification of collection service issues/delays
- ◆ Embrace OpenGov Asset Management System
- ◆ *Utilize full time Dept. Assistant for cart management and residence inquiries. Approximately 700 additional residences since 2016.*



Sewer Division - Services Provided

- **Funded by Sewer Enterprise Fund** – No contribution from General Fund – Does Not Affect Tax Rate
- **Comply with all Town, City, State, and Federal Regulations**
- **Maintain and operate Town owned sewer collection and transmission system.**
 - Systematic cleaning & video inspection for condition assessment condition of:
 - 45 Miles of Sewer
 - Over 800 Manholes
 - Rotate through the collection system every 3-4 years
 - Telemetered monitoring and weekly inspection/weekly maintenance of 6 Pumping Stations
 - Schedule/Coordinate repairs as necessary
 - Over \$60 Million in Assets
 - Environmental Engineer on call 24/7

- **Coordinate construction of replacement and new Town owned sewer collection and transmission system.**
 - Recently completed Plaza 28 Pump Station and Force Main replacement
 - Recently completed South Londonderry Interceptor extension
 - Recently completed Wastewater Facility Plan update
 - Preparation for upcoming Pillsbury Rd. Pump Station and Force Main Construction
 - Schedule / Coordinate repairs as necessary

- **Administer and Enforce Industrial Pretreatment Program.**
 - Required to protect the sewers and wastewater treatment facilities from damage and/or operational upsets and bypasses
 - 75 Industrial Sewer Accounts
 - Require Industrial Discharge permitting and periodic inspection specific to each facility
 - Larger facilities require flow monitoring, flow sampling, and periodic compliance reports
 - One of the largest programs in NH (based on flow to sewer)

- **Implement and maintain Sewer Ordinance, Sewer Use and Permitting Regulations, Inter-municipal Sewer Agreements.**
 - Periodic review and updates as required
- **Sewer billing program**
 - Produce and deliver quarterly sewer billing data to Town Tax Collector
 - 75 Industrial users
 - 430 Commercial users
 - 2,738 Residential users
 - Continuously address sewer customer inquiries and update sewer account information as needed
 - In the past 11 years, 416 new sewer accounts have been added, representing a 30 % increase in the number of sewer accounts now serving 3,243 residences and businesses
 - First quarter FY-14: Total sewer accounts: 1,436
 - First Quarter of FY-25: Total sewer accounts: 1,852
- **Review sewer development proposals, write permits, and inspect sewer construction.**
- **Prepare and maintain sewer records.**

FY-27 Goals:

- Implement the June 2024 Wastewater Facilities Plan's recommendations to address future public sewer systems needs.
- Maintain 100% Compliance with the Town's Industrial Pretreatment Program
- Assure compliance with EPA and NHDES regulations
- Utilize OpenGov asset management approach to cost effectively maximize the useful life of the \$60 million sewer collection and transmission systems.
- Maintain Sewer Operating Budget that is fully funded by sewer users of the system.
- *Utilize full time Dept. Assistant for sewer related inquiries*



Questions?