

Welcome!!!
Budget FY-2027



Dave Wholley
Director of Public Works



Londonderry *Department of Public Works*

Comprises 6 Divisions



Highway



Engineering



Fleet



Solid Waste

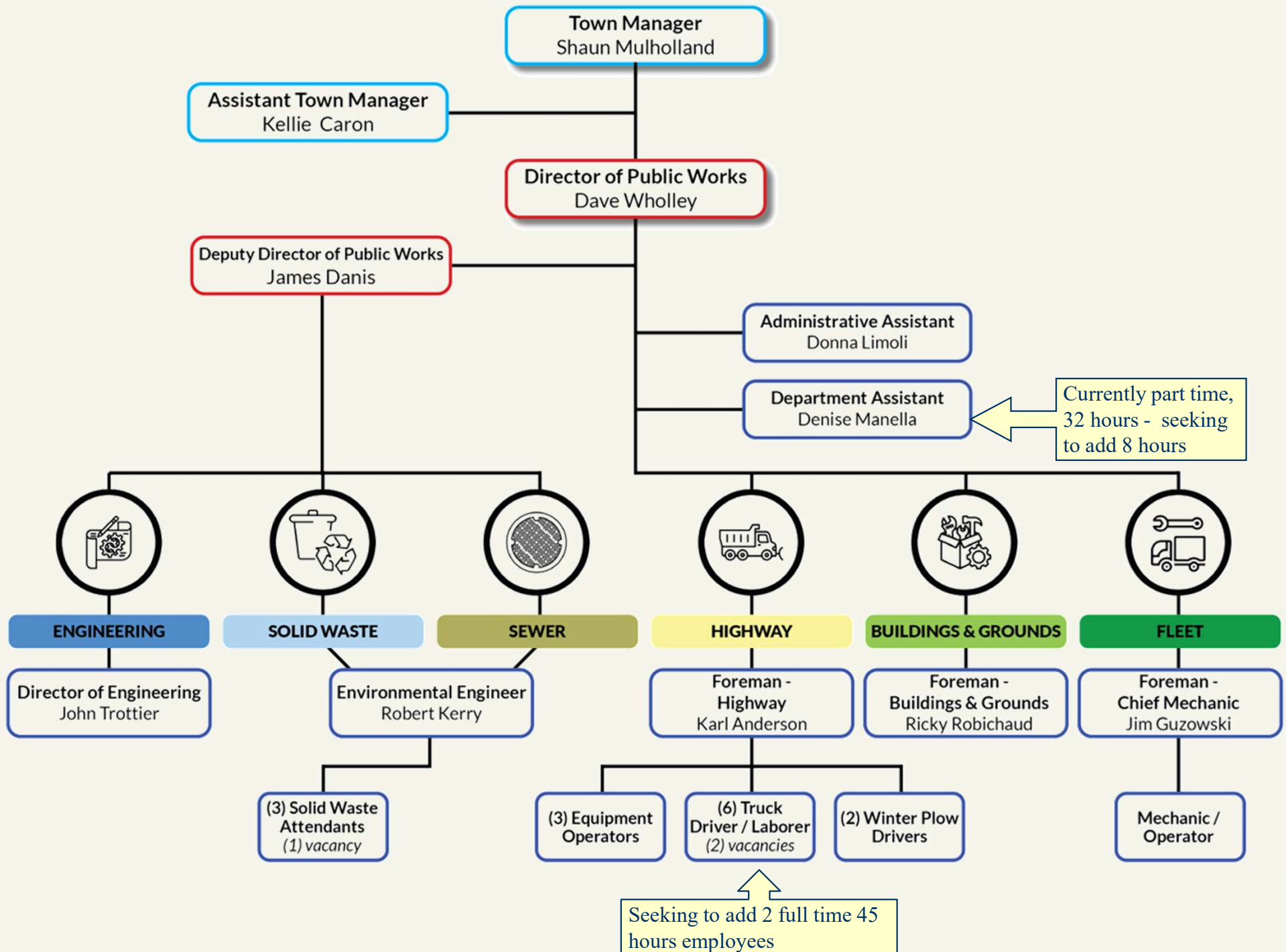


Buildings & Grounds



Sewer

Organizational Chart – Department of Public Works





Challenger 2008



Trackless 2025



Highway Division Services & Responsibilities

- ◆ **Repair of Town roads, catch basins, drainage pipes and swales**
- ◆ **Effective snow and ice removal for Town roads**
- ◆ **Perform maintenance along the Town's right-of-way**
- ◆ **Repair and replace regulatory street signage**
- ◆ **Gravel and grade road shoulders**
- ◆ **Pavement preservation- Fill potholes, crack sealing, patch paving**
- ◆ **Clear roadside brush and removal of hazardous trees**
- ◆ **Catch basin repairs**
- ◆ **Implement Roadway Maintenance and Improvement Plan**



Hot Box 2025





FY-25 Road Construction:

- Avery
- Gardner
- Gary
- Gilcreast (portion)
- Harvey (portion)
- Kim
- Kitt
- Parmenter
- Wallace
- Winding Pond (portion)

20 Snow
& Ice
storms
plowed

Line striping
double yellow
461,829 LF
White
615,111 LF

10 Roads
paved

85 Trees
Removed

Potholes
Filled

Catch
basins
repaired

Signs
replaced

FY-27 Goals

- Establish Pavement Condition Index (PCI)
- Develop a 5-year formalized road program

FY-2026 Road Goals: Fall 2025

- Boyd Rd. (Lexington to Town Line)
- Hovey Rd. (Portion)
- Leelyn Circle
- Melody Lane
- Ridgemont Dr.
- Shelley Dr.
- Sheridan Dr.
- Symmes Dr.
- White Plains Ave. (portion)
- Woodhenge Circle
- Woods Ave.

Spring 2026

- Ashley Dr.
- Bittersweet Lane
- Currier Dr.
- Hampshire Lane
- Imperial Dr.
- Jewel Ct.
- Raintree Dr.
- Spring Rd.
- Thornton Rd.
- Wilshire Dr.

Winter Maintenance

“Red and Blue follow Yellow”



Winter 24-25 Accomplishments:

- 13 Routes covering 373.16 Lane miles to include 187 cul-de-sacs and 44 Dead ends
- 20 Snow and ice storms
- 61" of snow plowed
- 3,231 tons of salt applied
- 1,371 tons of sand applied
- Depending on storms intensity, duration and timing; it took approximately 4-5 hours to make one complete pass.



FY-27 Goals:

- 2 new truck driver/laborers
- Create route chasers/assistance
- Provide sidewalk winter maintenance



2025-2026 Statistics

Town Equipment

- (2) Loaders
- (12) 6-Wheelers w/plow, wing and salter
- (1) 6-Wheeler w/plow and salter
- (4) 1-Ton Dump trucks w/plow and salter
- (2) 1-Ton Utility body w/plow
- (1) 1-Ton Pick Up w/plow (supervisor vehicle)

22 Total pieces of snow fighting equipment

Contracted Equipment

- (1) 6-Wheeler w/plow and salter
- (3) 1-Ton Dump trucks w/plow and salter

Personnel

- (1) Director of Public Works
- (2) Foreman
- (1) Chief Mechanic
- (1) Equipment Operator/Mechanic
- (3) Equipment Operators
- (3) Truck Driver/Laborers
(3 Vacancies and one on military deployment)

11 Full time available

- (2) Temporary part time truck drivers
- (4) ***Contracted equipment***

TOTAL 17 PLOW OPERATORS

Impacts causing prolonged plowing

- ◆ Assumes all staff are available and able bodied –i.e. not ill (flu, covid), not on leave (injured, bereavement, FMLA)
- ◆ Assumes we are fully staffed (vacancies, retirement, etc.)
- ◆ Equipment age/repairs (average life age improved from 8.2 to 5.3 years)
- ◆ Staff trained on equipment and routes (including contractors)
- ◆ 4 rookies plowing their inaugural season
- ◆ Duration of events-small staff ultimately needs rest at some point
- ◆ No mutual aid available to DPW
- ◆ The unknown!!! (Tree down, wires down, accidents, breakdowns, blown tires, etc.)
- ◆ Duration of storm, time of storm, visibility, accumulation rates, type of precipitation, ice, blocked drains, vehicles in the street, items on shoulders or cul-de-sacs like trailers, boats, basketball hoops

Costly Challenges:

- ◆ Londonderry has invested approximately 5.52M into its 22 pieces of snow fighting equipment
- ◆ On average we use 3,225 Tons of sand at a cost of \$62,900 (FY26 budget is \$30,000)
- ◆ On average we use 3,825 Tons of salt at a cost of \$290,318 (FY26 budget is \$290,000)
- ◆ A round of straight salt on the 13 routes is \$9,335 just for the salt.
- ◆ Fuel, plow cutting edges, equipment parts, etc. are other factors.
- ◆ HOWEVER, no operations decisions are based on money. Public Safety is always at the forefront of the decisions for the timeliness of an operations duration. These decisions are taken very seriously.

Advantages to high level of service snow plowing:

- ◆ School doesn't get called or delayed
- ◆ Traffic is not slowed due to accidents
- ◆ Commerce-limited impact
- ◆ Deliveries arrive as scheduled
- ◆ Mail-prescriptions, bills, holiday cards, etc.
- ◆ Events-youth sports, plays, concerts, gatherings
- ◆ Medical calls- to hospitals, wellness checks, hospice care



Fleet Division Services & Responsibilities

- ◆ Maintain and repair department's vehicles and heavy equipment
- ◆ Provide preparations for NH State Inspections
- ◆ Weld and fabricate materials as needed
- ◆ Restore and repaint equipment experiencing rotting or decay
- ◆ Equipment- Wheeled excavator, Backhoe, (2) Loaders, (1) paving roller, (1) roadside tractor
- ◆ Vehicles- (12) 6-wheel dump trucks w/plow packages, (1) basin truck, (5) 4x4 pick ups, (2) 4x4 Utility body p/u, passenger van, (4) 4x4 one ton dump trucks, (1) trackless machine
- ◆ Tow behinds- (1) chippers, (1) air compressors, (3) equipment trailers, (1) crack sealer, (1) hot box, (1) Bobcat
- ◆ Small engine tools- chainsaws, leaf blowers, lawn mowers, etc.

FY-27 Goals:

- ◆ **Utilize fleet module in OpenGov for long term preventative maintenance**
- ◆ **Assume maintenance of Town Hall vehicles if additional positions added**



Building and Grounds (General Gov) **Services & Responsibilities**

- Oversight and upkeep of all Town Facilities-HVAC, Fire protection, elevators, electrical, roofing, lighting, flooring, cleaning, etc.
- Primary facilities-DPW, Town Hall, Senior Center, Access Center and the Lions Hall
- Provide assistance to all 3 Fire Houses, PD, and Leach Library
- Maintenance and oversight of Town Common
- Oversight and upkeep of all 8 cemeteries (3 active and 5 historic)-schedule burials, layout graves and foot stones, clean up plants, flowers and other debris, install veterans' markers

FY-27 Goals:

- **Completion of Town Hall sprinkler lines and fogged windows**

DEPARTMENT OF PUBLIC WORKS FEASIBILITY STUDY

town of londonderry, new hampshire





FY-27 Goals

DPW working group ongoing with report due to Town Council by June 2026

The Town of Londonderry commissioned a feasibility study to evaluate the adequacy of its existing Department of Public Works (DPW) facilities, which were facing operational inefficiencies and physical deficiencies due to aging infrastructure and evolving service demands.

To address these challenges, the study involved a comprehensive planning process that included interviews with key department personnel, assessment of existing conditions, and documentation of facility limitations. A detailed space needs analysis was conducted to identify current and future operational requirements. Conceptual site and building layouts were developed to explore potential solutions, along with phased implementation strategies to accommodate budgetary and logistical considerations. Conceptual cost estimates and presentation materials were prepared to support stakeholder engagement and decision-making.

The study provided the town with a comprehensive understanding of its DPW facility needs and identified viable development options to support the modernization of operations. These insights assisted the town in establishing a DPW Facilities Working Group as the next step to guide the project forward.

- programming
- existing conditions assessment
- building & site alternatives development
- master plan/phased construction approach
- salt & sand storage
- consolidated operations
- compliant wash bay & stormwater system
- solar-ready roof

client contact

Dave Wholley
Director of Public Works
603-432-1100 ext.152
dwholley@londonderrynh.gov

Cemeteries

FY-25 Accomplishments:

- Maintain 8 cemeteries in town, (3 are active, only Pillsbury has plots available for sale)
- 22 full burials
- 22 cremations
- 16 Double plots sold
- 9 Single plots sold
- 49 Double and 4 Single plots available (as of 10/10/25)
- Fee schedule was updated
- End of presales for plots

FY-27 Goals

- Cemetery expansion (Pillsbury)
- Columbarium research
- Monument restoration
- *Utilize full time Dept. Assistant for Cemetery inquiries and interments*



Other Services Provided

- ◆ Old Home Day Celebration
- ◆ Concerts on the Common
- ◆ Town Forest
- ◆ Christmas on the Common
- ◆ Voting polls
- ◆ Drop off center
- ◆ Senior Banners
- ◆ Memorial Day flags – flag maintenance General Gov't.
- ◆ Minor facility renovations
- ◆ Provide assistance to other civic groups, organizations and departments (Trailways, LAFA, West Rd, Recreation)

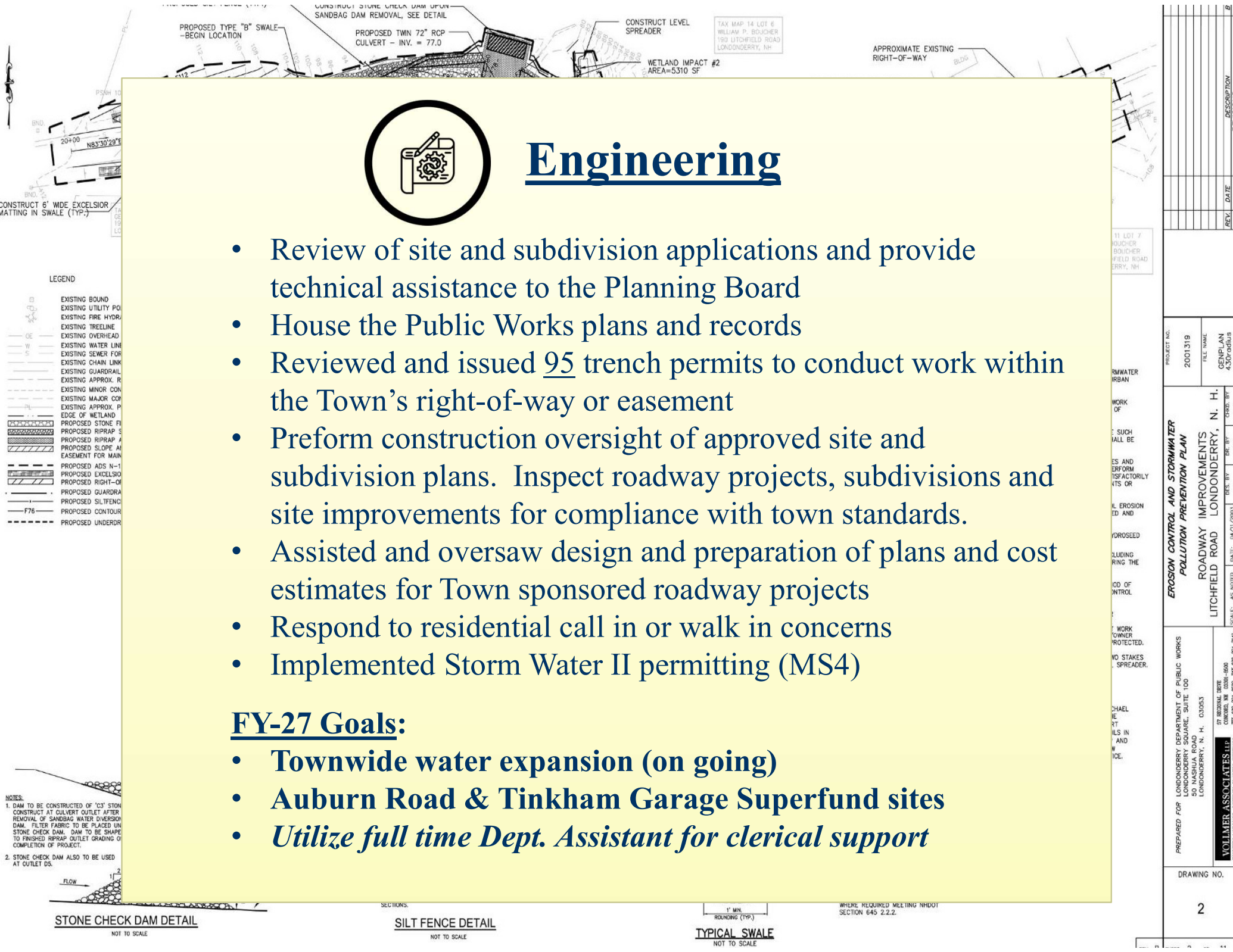


Engineering

- Review of site and subdivision applications and provide technical assistance to the Planning Board
- House the Public Works plans and records
- Reviewed and issued 95 trench permits to conduct work within the Town's right-of-way or easement
- Perform construction oversight of approved site and subdivision plans. Inspect roadway projects, subdivisions and site improvements for compliance with town standards.
- Assisted and oversaw design and preparation of plans and cost estimates for Town sponsored roadway projects
- Respond to residential call in or walk in concerns
- Implemented Storm Water II permitting (MS4)

FY-27 Goals:

- **Townwide water expansion (on going)**
- **Auburn Road & Tinkham Garage Superfund sites**
- ***Utilize full time Dept. Assistant for clerical support***

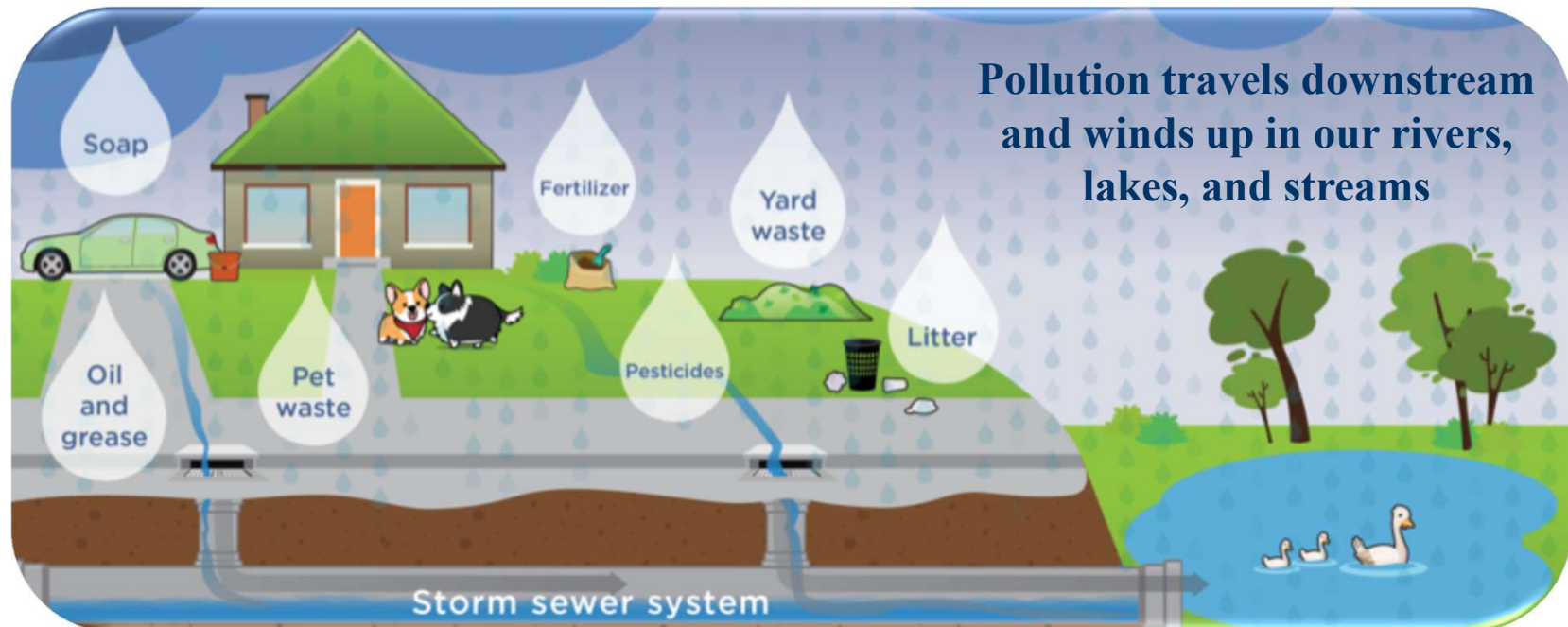


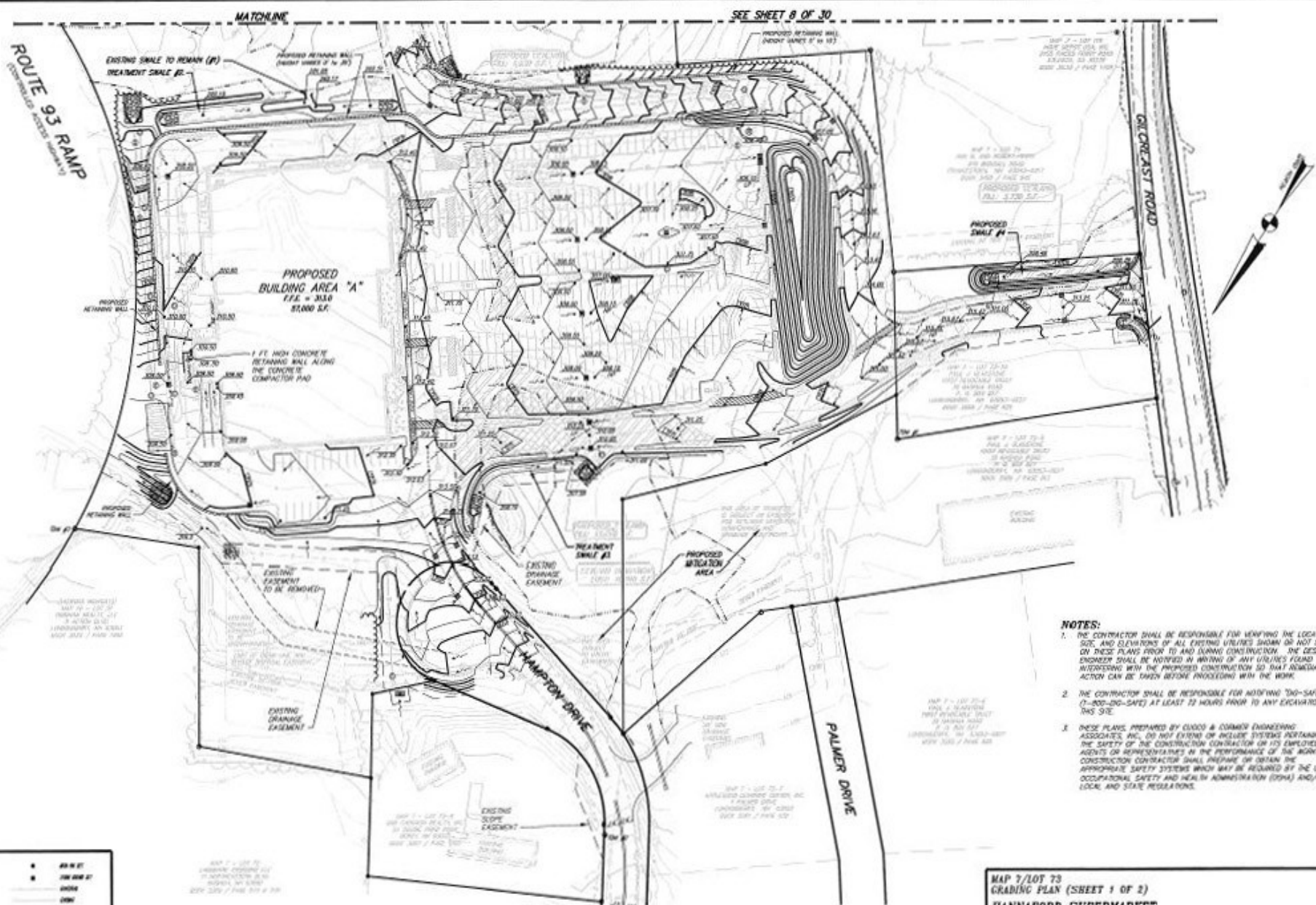
Stormwater Phase II Permitting - requires the implementation of a storm water program that includes:

- Public education & outreach on storm water impacts;
- Public involvement/participation;
- Illicit discharge detection and elimination;
- Construction site storm water runoff control;
- Post construction storm water management in new development and redevelopment;
- Pollution prevention/good housekeeping for municipal operations.

FY-27 Goals:

- **Continued compliance with MS4 permitting**
- *Utilize full time Dept. Assistant for outreach*

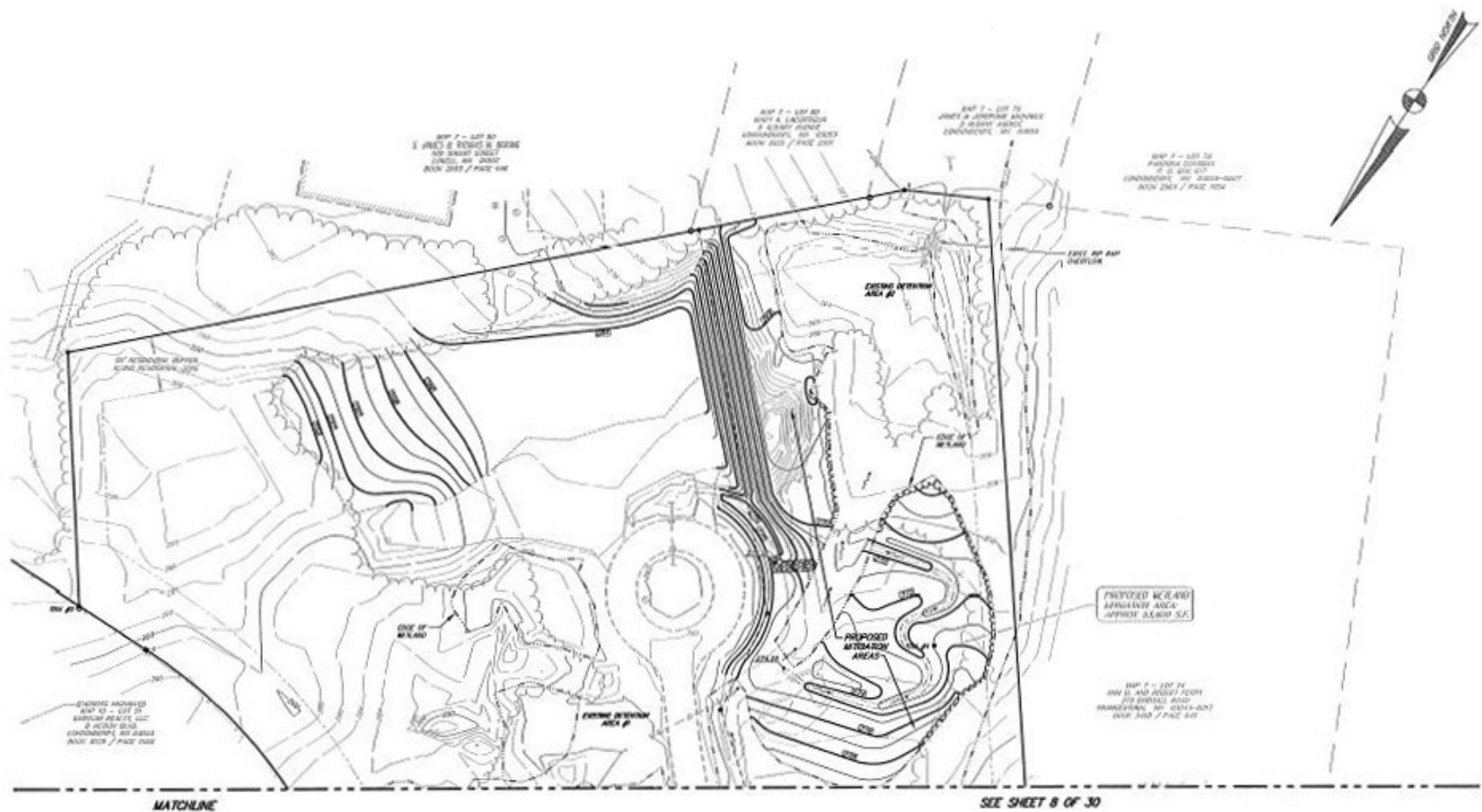




- NOTES:**
1. THE CONTRACTOR SHALL BE RESPONSIBLE FOR VERIFYING THE LOCATION, SIZE, AND ELEVATIONS OF ALL EXISTING UTILITIES SHOWN OR NOT SHOWN ON THESE PLANS PRIOR TO AND DURING CONSTRUCTION. THE DESIGN ENGINEER SHALL BE NOTIFIED IN WRITING OF ANY UTILITIES FOUND NOT CORRESPONDING WITH THE PROPOSED CONSTRUCTION SO THAT APPROPRIATE ACTION CAN BE TAKEN BEFORE PROCEEDING WITH THE WORK.
 2. THE CONTRACTOR SHALL BE RESPONSIBLE FOR NOTIFYING "911-SAFE" (7-800-280-SAFE) AT LEAST 24 HOURS PRIOR TO ANY EXCAVATION ON THIS SITE.
 3. THESE PLANS PREPARED BY CUOCO & CORMIER ENGINEERING ASSOCIATES, INC. DO NOT EXTEND OR INCLUDE SYSTEMS PERTAINING TO THE SAFETY OF THE CONSTRUCTION OR MAINTENANCE OF ITS EMPLOYEES, AGENTS OR REPRESENTATIVES IN THE PERFORMANCE OF THE WORK. THE CONSTRUCTION CONTRACTOR SHALL PREPARE OR OBTAIN THE APPROPRIATE SAFETY SYSTEMS WHICH MAY BE REQUIRED BY THE U.S. OCCUPATIONAL SAFETY AND HEALTH ADMINISTRATION (OSHA) AND/OR LOCAL AND STATE REGULATIONS.

LEGEND:

○	3/4" DIA. PIPE	●	3/4" DIA. PIPE
○	1" DIA. PIPE	●	1" DIA. PIPE
○	2" DIA. PIPE	●	2" DIA. PIPE
○	3" DIA. PIPE	●	3" DIA. PIPE
○	4" DIA. PIPE	●	4" DIA. PIPE
○	6" DIA. PIPE	●	6" DIA. PIPE
○	8" DIA. PIPE	●	8" DIA. PIPE
○	10" DIA. PIPE	●	10" DIA. PIPE
○	12" DIA. PIPE	●	12" DIA. PIPE
○	15" DIA. PIPE	●	15" DIA. PIPE
○	18" DIA. PIPE	●	18" DIA. PIPE
○	24" DIA. PIPE	●	24" DIA. PIPE
○	30" DIA. PIPE	●	30" DIA. PIPE
○	36" DIA. PIPE	●	36" DIA. PIPE
○	42" DIA. PIPE	●	42" DIA. PIPE
○	48" DIA. PIPE	●	48" DIA. PIPE
○	54" DIA. PIPE	●	54" DIA. PIPE
○	60" DIA. PIPE	●	60" DIA. PIPE
○	66" DIA. PIPE	●	66" DIA. PIPE
○	72" DIA. PIPE	●	72" DIA. PIPE
○	78" DIA. PIPE	●	78" DIA. PIPE
○	84" DIA. PIPE	●	84" DIA. PIPE
○	90" DIA. PIPE	●	90" DIA. PIPE
○	96" DIA. PIPE	●	96" DIA. PIPE
○	102" DIA. PIPE	●	102" DIA. PIPE
○	108" DIA. PIPE	●	108" DIA. PIPE
○	114" DIA. PIPE	●	114" DIA. PIPE
○	120" DIA. PIPE	●	120" DIA. PIPE
○	126" DIA. PIPE	●	126" DIA. PIPE
○	132" DIA. PIPE	●	132" DIA. PIPE
○	138" DIA. PIPE	●	138" DIA. PIPE
○	144" DIA. PIPE	●	144" DIA. PIPE
○	150" DIA. PIPE	●	150" DIA. PIPE
○	156" DIA. PIPE	●	156" DIA. PIPE
○	162" DIA. PIPE	●	162" DIA. PIPE
○	168" DIA. PIPE	●	168" DIA. PIPE
○	174" DIA. PIPE	●	174" DIA. PIPE
○	180" DIA. PIPE	●	180" DIA. PIPE
○	186" DIA. PIPE	●	186" DIA. PIPE
○	192" DIA. PIPE	●	192" DIA. PIPE
○	198" DIA. PIPE	●	198" DIA. PIPE
○	204" DIA. PIPE	●	204" DIA. PIPE
○	210" DIA. PIPE	●	210" DIA. PIPE
○	216" DIA. PIPE	●	216" DIA. PIPE
○	222" DIA. PIPE	●	222" DIA. PIPE
○	228" DIA. PIPE	●	228" DIA. PIPE
○	234" DIA. PIPE	●	234" DIA. PIPE
○	240" DIA. PIPE	●	240" DIA. PIPE
○	246" DIA. PIPE	●	246" DIA. PIPE
○	252" DIA. PIPE	●	252" DIA. PIPE
○	258" DIA. PIPE	●	258" DIA. PIPE
○	264" DIA. PIPE	●	264" DIA. PIPE
○	270" DIA. PIPE	●	270" DIA. PIPE
○	276" DIA. PIPE	●	276" DIA. PIPE
○	282" DIA. PIPE	●	282" DIA. PIPE
○	288" DIA. PIPE	●	288" DIA. PIPE
○	294" DIA. PIPE	●	294" DIA. PIPE
○	300" DIA. PIPE	●	300" DIA. PIPE
○	306" DIA. PIPE	●	306" DIA. PIPE
○	312" DIA. PIPE	●	312" DIA. PIPE
○	318" DIA. PIPE	●	318" DIA. PIPE
○	324" DIA. PIPE	●	324" DIA. PIPE
○	330" DIA. PIPE	●	330" DIA. PIPE
○	336" DIA. PIPE	●	336" DIA. PIPE
○	342" DIA. PIPE	●	342" DIA. PIPE
○	348" DIA. PIPE	●	348" DIA. PIPE
○	354" DIA. PIPE	●	354" DIA. PIPE
○	360" DIA. PIPE	●	360" DIA. PIPE
○	366" DIA. PIPE	●	366" DIA. PIPE
○	372" DIA. PIPE	●	372" DIA. PIPE
○	378" DIA. PIPE	●	378" DIA. PIPE
○	384" DIA. PIPE	●	384" DIA. PIPE
○	390" DIA. PIPE	●	390" DIA. PIPE
○	396" DIA. PIPE	●	396" DIA. PIPE
○	402" DIA. PIPE	●	402" DIA. PIPE
○	408" DIA. PIPE	●	408" DIA. PIPE
○	414" DIA. PIPE	●	414" DIA. PIPE
○	420" DIA. PIPE	●	420" DIA. PIPE
○	426" DIA. PIPE	●	426" DIA. PIPE
○	432" DIA. PIPE	●	432" DIA. PIPE
○	438" DIA. PIPE	●	438" DIA. PIPE
○	444" DIA. PIPE	●	444" DIA. PIPE
○	450" DIA. PIPE	●	450" DIA. PIPE
○	456" DIA. PIPE	●	456" DIA. PIPE
○	462" DIA. PIPE	●	462" DIA. PIPE
○	468" DIA. PIPE	●	468" DIA. PIPE
○	474" DIA. PIPE	●	474" DIA. PIPE
○	480" DIA. PIPE	●	480" DIA. PIPE
○	486" DIA. PIPE	●	486" DIA. PIPE
○	492" DIA. PIPE	●	492" DIA. PIPE
○	498" DIA. PIPE	●	498" DIA. PIPE
○	504" DIA. PIPE	●	504" DIA. PIPE
○	510" DIA. PIPE	●	510" DIA. PIPE
○	516" DIA. PIPE	●	516" DIA. PIPE
○	522" DIA. PIPE	●	522" DIA. PIPE
○	528" DIA. PIPE	●	528" DIA. PIPE
○	534" DIA. PIPE	●	534" DIA. PIPE
○	540" DIA. PIPE	●	540" DIA. PIPE
○	546" DIA. PIPE	●	546" DIA. PIPE
○	552" DIA. PIPE	●	552" DIA. PIPE
○	558" DIA. PIPE	●	558" DIA. PIPE
○	564" DIA. PIPE	●	564" DIA. PIPE
○	570" DIA. PIPE	●	570" DIA. PIPE
○	576" DIA. PIPE	●	576" DIA. PIPE
○	582" DIA. PIPE	●	582" DIA. PIPE
○	588" DIA. PIPE	●	588" DIA. PIPE
○	594" DIA. PIPE	●	594" DIA. PIPE
○	600" DIA. PIPE	●	600" DIA. PIPE
○	606" DIA. PIPE	●	606" DIA. PIPE
○	612" DIA. PIPE	●	612" DIA. PIPE
○	618" DIA. PIPE	●	618" DIA. PIPE
○	624" DIA. PIPE	●	624" DIA. PIPE
○	630" DIA. PIPE	●	630" DIA. PIPE
○	636" DIA. PIPE	●	636" DIA. PIPE
○	642" DIA. PIPE	●	642" DIA. PIPE
○	648" DIA. PIPE	●	648" DIA. PIPE
○	654" DIA. PIPE	●	654" DIA. PIPE
○	660" DIA. PIPE	●	660" DIA. PIPE
○	666" DIA. PIPE	●	666" DIA. PIPE
○	672" DIA. PIPE	●	672" DIA. PIPE
○	678" DIA. PIPE	●	678" DIA. PIPE
○	684" DIA. PIPE	●	684" DIA. PIPE
○	690" DIA. PIPE	●	690" DIA. PIPE
○	696" DIA. PIPE	●	696" DIA. PIPE
○	702" DIA. PIPE	●	702" DIA. PIPE
○	708" DIA. PIPE	●	708" DIA. PIPE
○	714" DIA. PIPE	●	714" DIA. PIPE
○	720" DIA. PIPE	●	720" DIA. PIPE
○	726" DIA. PIPE	●	726" DIA. PIPE
○	732" DIA. PIPE	●	732" DIA. PIPE
○	738" DIA. PIPE	●	738" DIA. PIPE
○	744" DIA. PIPE	●	744" DIA. PIPE
○	750" DIA. PIPE	●	750" DIA. PIPE
○	756" DIA. PIPE	●	756" DIA. PIPE
○	762" DIA. PIPE	●	762" DIA. PIPE
○	768" DIA. PIPE	●	768" DIA. PIPE
○	774" DIA. PIPE	●	774" DIA. PIPE
○	780" DIA. PIPE	●	780" DIA. PIPE
○	786" DIA. PIPE	●	786" DIA. PIPE
○	792" DIA. PIPE	●	792" DIA. PIPE
○	798" DIA. PIPE	●	798" DIA. PIPE
○	804" DIA. PIPE	●	804" DIA. PIPE
○	810" DIA. PIPE	●	810" DIA. PIPE
○	816" DIA. PIPE	●	816" DIA. PIPE
○	822" DIA. PIPE	●	822" DIA. PIPE
○	828" DIA. PIPE	●	828" DIA. PIPE
○	834" DIA. PIPE	●	834" DIA. PIPE
○	840" DIA. PIPE	●	840" DIA. PIPE
○	846" DIA. PIPE	●	846" DIA. PIPE
○	852" DIA. PIPE	●	852" DIA. PIPE
○	858" DIA. PIPE	●	858" DIA. PIPE
○	864" DIA. PIPE	●	864" DIA. PIPE
○	870" DIA. PIPE	●	870" DIA. PIPE
○	876" DIA. PIPE	●	876" DIA. PIPE
○	882" DIA. PIPE	●	882" DIA. PIPE
○	888" DIA. PIPE	●	888" DIA. PIPE
○	894" DIA. PIPE	●	894" DIA. PIPE
○	900" DIA. PIPE	●	900" DIA. PIPE
○	906" DIA. PIPE	●	906" DIA. PIPE
○	912" DIA. PIPE	●	912" DIA. PIPE
○	918" DIA. PIPE	●	918" DIA. PIPE
○	924" DIA. PIPE	●	924" DIA. PIPE
○	930" DIA. PIPE	●	930" DIA. PIPE
○	936" DIA. PIPE	●	936" DIA. PIPE
○	942" DIA. PIPE	●	942" DIA. PIPE
○	948" DIA. PIPE	●	948" DIA. PIPE
○	954" DIA. PIPE	●	954" DIA. PIPE
○	960" DIA. PIPE	●	960" DIA. PIPE
○	966" DIA. PIPE	●	966" DIA. PIPE
○	972" DIA. PIPE	●	972" DIA. PIPE
○	978" DIA. PIPE	●	978" DIA. PIPE
○	984" DIA. PIPE	●	984" DIA. PIPE
○	990" DIA. PIPE	●	990" DIA. PIPE
○	996" DIA. PIPE	●	996" DIA. PIPE
○	1002" DIA. PIPE	●	1002" DIA. PIPE
○	1008" DIA. PIPE	●	1008" DIA. PIPE
○	1014" DIA. PIPE	●	1014" DIA. PIPE
○	1020" DIA. PIPE	●	1020" DIA. PIPE
○	1026" DIA. PIPE	●	1026" DIA. PIPE
○	1032" DIA. PIPE	●	1032" DIA. PIPE
○	1038" DIA. PIPE	●	1038" DIA. PIPE
○	1044" DIA. PIPE	●	1044" DIA. PIPE
○	1050" DIA. PIPE	●	1050" DIA. PIPE
○	1056" DIA. PIPE	●	1056" DIA. PIPE
○	1062" DIA. PIPE	●	1062" DIA. PIPE
○	1068" DIA. PIPE	●	1068" DIA. PIPE
○	1074" DIA. PIPE	●	1074" DIA. PIPE
○	1080" DIA. PIPE	●	1080" DIA. PIPE
○	1086" DIA. PIPE	●	1086" DIA. PIPE
○	1092" DIA. PIPE	●	1092" DIA. PIPE
○	1098" DIA. PIPE	●	1098" DIA. PIPE
○	1104" DIA. PIPE	●	1104" DIA. PIPE
○	1110" DIA. PIPE	●	1110" DIA. PIPE
○	1116" DIA. PIPE	●	1116" DIA. PIPE
○	1122" DIA. PIPE	●	1122" DIA. PIPE
○	1128" DIA. PIPE	●	1128" DIA. PIPE
○	1134" DIA. PIPE	●	1134" DIA. PIPE
○	1140" DIA. PIPE	●	1140" DIA. PIPE
○	1146" DIA. PIPE	●	1146" DIA. PIPE
○	1152" DIA. PIPE	●	1152" DIA. PIPE
○	1158" DIA. PIPE	●	1158" DIA. PIPE
○	1164" DIA. PIPE	●	1164" DIA. PIPE
○	1170" DIA. PIPE	●	1170" DIA. PIPE
○	1176" DIA. PIPE	●	1176" DIA. PIPE
○	1182" DIA. PIPE	●	1182" DIA. PIPE
○	1188" DIA. PIPE	●	1188" DIA. PIPE
○	1194" DIA. PIPE	●	1194" DIA. PIPE
○	1200" DIA. PIPE	●	1200" DIA. PIPE
○	1206" DIA. PIPE	●	1206" DIA. PIPE
○	1212" DIA. PIPE	●	1212" DIA. PIPE
○	1218" DIA. PIPE	●	1218" DIA. PIPE
○	1224" DIA. PIPE	●	1224" DIA. PIPE
○	1230" DIA. PIPE	●	1230" DIA. PIPE
○	1236" DIA. PIPE	●	1236" DIA. PIPE
○	1242" DIA. PIPE	●	1242" DIA. PIPE
○	1248" DIA. PIPE	●	1248" DIA. PIPE
○	1254" DIA. PIPE	●	1254" DIA. PIPE
○	1260" DIA. PIPE	●	1260" DIA. PIPE
○	1266" DIA. PIPE	●	1266" DIA. PIPE
○	1272" DIA. PIPE	●	1272" DIA. PIPE
○	1278" DIA. PIPE	●	1278" DIA. PIPE
○	1284" DIA. PIPE	●	1284" DIA. PIPE
○	1290" DIA. PIPE	●	1290" DIA. PIPE
○	1296" DIA. PIPE	●	1296" DIA. PIPE
○	1302" DIA. PIPE	●	1302" DIA. PIPE
○	1308" DIA. PIPE	●	1308" DIA. PIPE
○	1314" DIA. PIPE	●	1314" DIA. PIPE
○	1320" DIA. PIPE	●	1320" DIA. PIPE
○	1326" DIA. PIPE	●	1326" DIA. PIPE
○	1332" DIA. PIPE	●	1332" DIA. PIPE
○	1338" DIA. PIPE	●	1338" DIA. PIPE
○	1344" DIA. PIPE	●	1344" DIA. PIPE
○	1350" DIA. PIPE	●	1350" DIA. PIPE
○	1356" DIA. PIPE	●	1356" DIA. PIPE
○	1362" DIA. PIPE	●	1362" DIA. PIPE
○	1368" DIA. PIPE	●	1368" DIA. PIPE
○	1374" DIA. PIPE	●	1374" DIA. PIPE
○	1380" DIA. PIPE	●	1380" DIA. PIPE
○	1386" DIA. PIPE	●	1386" DIA. PIPE
○	1392" DIA. PIPE	●	1392" DIA. PIPE
○	1398" DIA. PIPE	●	1398" DIA. PIPE
○	1404" DIA. PIPE	●	1404" DIA. PIPE
○	1410" DIA. PIPE	●	1410" DIA. PIPE
○	1416" DIA. PIPE	●	1416" DIA. PIPE
○	1422" DIA. PIPE	●	1422" DIA. PIPE
○	1428" DIA. PIPE	●	1428" DIA. PIPE
○	1434" DIA. PIPE	●	1434" DIA. PIPE
○	1440" DIA. PIPE	●	



LEGEND:

10' contour	10' contour	10' contour
5' contour	5' contour	5' contour
1' contour	1' contour	1' contour
Proposed Road	Proposed Road	Proposed Road
Proposed Driveway	Proposed Driveway	Proposed Driveway
Proposed Grading Area	Proposed Grading Area	Proposed Grading Area
Proposed Road	Proposed Road	Proposed Road
Proposed Driveway	Proposed Driveway	Proposed Driveway
Proposed Grading Area	Proposed Grading Area	Proposed Grading Area
Proposed Road	Proposed Road	Proposed Road
Proposed Driveway	Proposed Driveway	Proposed Driveway
Proposed Grading Area	Proposed Grading Area	Proposed Grading Area

NO.	DESCRIPTION	ELEVATION
1	3.0' DRAINER WITH FIVE FEET	260.00
2	NEW DRAINAGE BY IMPROVED DRIVE	250.00
3	3.0' DRAINER WITH FIVE FEET	250.00
4	3.0' DRAINER WITH FIVE FEET	250.00
5	3.0' DRAINER WITH FIVE FEET	250.00



NO.	DATE	DESCRIPTION	BY
1	6/15/00	REVISED DRAINAGE	BJC
2	6/20/00	REVISED DRAINAGE	BJC
3	6/20/00	REVISED DRAINAGE	BJC
4	6/20/00	REVISED DRAINAGE	BJC
5	6/20/00	REVISED DRAINAGE	BJC

NO.	DATE	DESCRIPTION	BY
1	6/15/00	REVISED DRAINAGE	BJC
2	6/20/00	REVISED DRAINAGE	BJC
3	6/20/00	REVISED DRAINAGE	BJC
4	6/20/00	REVISED DRAINAGE	BJC
5	6/20/00	REVISED DRAINAGE	BJC

MAP 7/LOT 73
GRADING PLAN (SHEET 2 OF 2)
HANNAFORD SUPERMARKET
HAMPTON DRIVE
LONDONDERRY, NEW HAMPSHIRE

PREPARED FOR:
HANNAFORD BROS. CO.
P.O. BOX 1000
PORTLAND, MAINE 04104

DESIGNED BY:
Cuoco & Cormier
CIVIL ENGINEERS - LAND SURVEYORS
7107 FORD ST. PORTLAND, ME 04106
TEL: 603-876-1111 FAX: 603-876-1112

SCALE: 1" = 50'
0 50 100 150 200

JULY 28, 2000

PROJECT NO. 00-0000

DATE OF RECORD: 6/15/00

DATE OF THIS SHEET: 7/28/00

DATE OF FIELD WORK: 6/15/00

DATE OF CALCULATION: 6/20/00

DATE OF PLOTTING: 7/28/00

DATE OF PRINTING: 7/28/00

PROJECT NO. 00-0000

DATE OF RECORD: 6/15/00

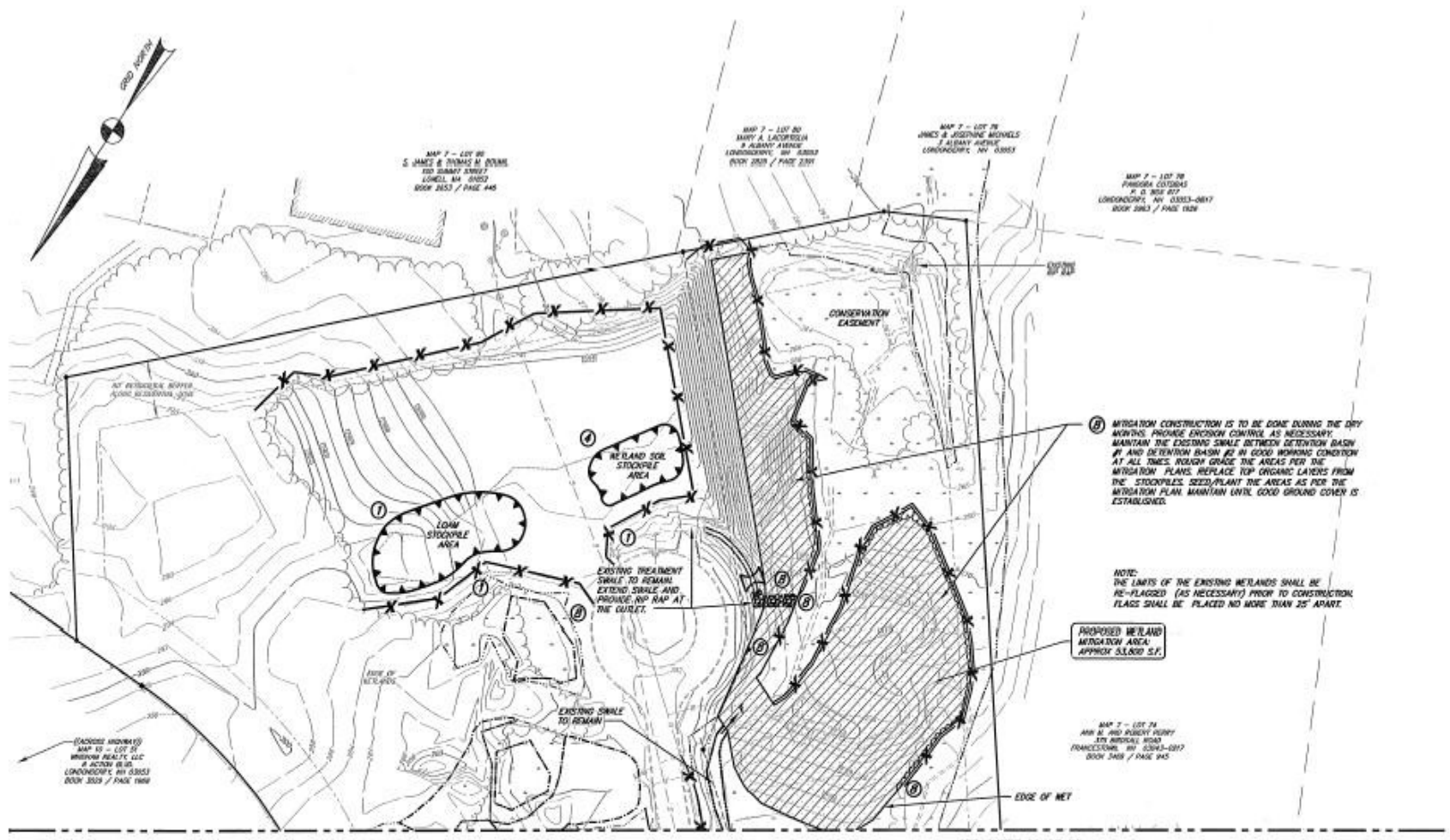
DATE OF THIS SHEET: 7/28/00

DATE OF FIELD WORK: 6/15/00

DATE OF CALCULATION: 6/20/00

DATE OF PLOTTING: 7/28/00

DATE OF PRINTING: 7/28/00



- LEGEND:**
- 4" IRON PIPE
 - 6" DRILL HOLE
 - STONE BOUND
 - SURVEY WALL
 - DRAIN MANHOLE
 - SEWER MANHOLE
 - CATCH BASIN
 - UTILITY POLE
 - GUY WIRE
 - WIRE UTILITY BOX
 - WIRE UTILITY PIT
 - SOIL
 - LIGHT
 - THE HIGHWAY
 - UNBURNED TREE HOLE
 - BURNED HOLE
 - GUY WIRE
 - EXISTING EASEMENT
 - QUADRANT
 - CURBING
 - EDGE OF PAVEMENT
 - EXISTING SIDEWALK LINE
 - CONCRETE PAD
 - BUILDING LINE
 - RIGHT OF WAY LINE
 - PROPERTY LINE
 - EDGE OF NET
 - APPROX. WATER LINE
 - APPROX. URAN LINE
 - APPROX. SEWER LINE
 - OVERHEAD WIRE
 - IRON PIPE

- STOCKPILE
- CONSTRUCTION GREEP RUBBER
- SILT FENCE
- DOUBLE SILT FENCE/SWAMP BARRI
- CATCH BASIN PROTECTION
- CHECK DAM
- SWALE
- MITIGATION AREA FROM ORIGINAL APPROVAL STILL TO BE CONSTRUCTED
- ADDITIONAL PROPOSED MITIGATION AREA
- MITIGATION AREA FROM ORIGINAL APPROVAL TO BE RELOCATED
- PROPOSED WEILAND FILL AREAS



#	DATE	DESCRIPTION	BY
1	6/11/00	REVISED OWNER OF RECORD	BCP
2	6/29/01	ADD STONE BOUND	BCP
3	6/29/01	REMOVE ANNOTATION	BCP
4	1/25/01	REVISIONS PER ERM COMMENTS	BCP
5	6/28/00	RE-DRAWING STOCKPILE AREA	BCP

OWNER: BCN
 DRAWN: MAP & AS
 CHECKED: BCN
 RECORDED: []

MAP 7/LOT 73
 DREDGE AND FILL/EROSION PLAN (SHEET 2 OF 2)
HANNAFORD SUPERMARKET
 HAMPTON DRIVE
 LONDONDERRY, NEW HAMPSHIRE

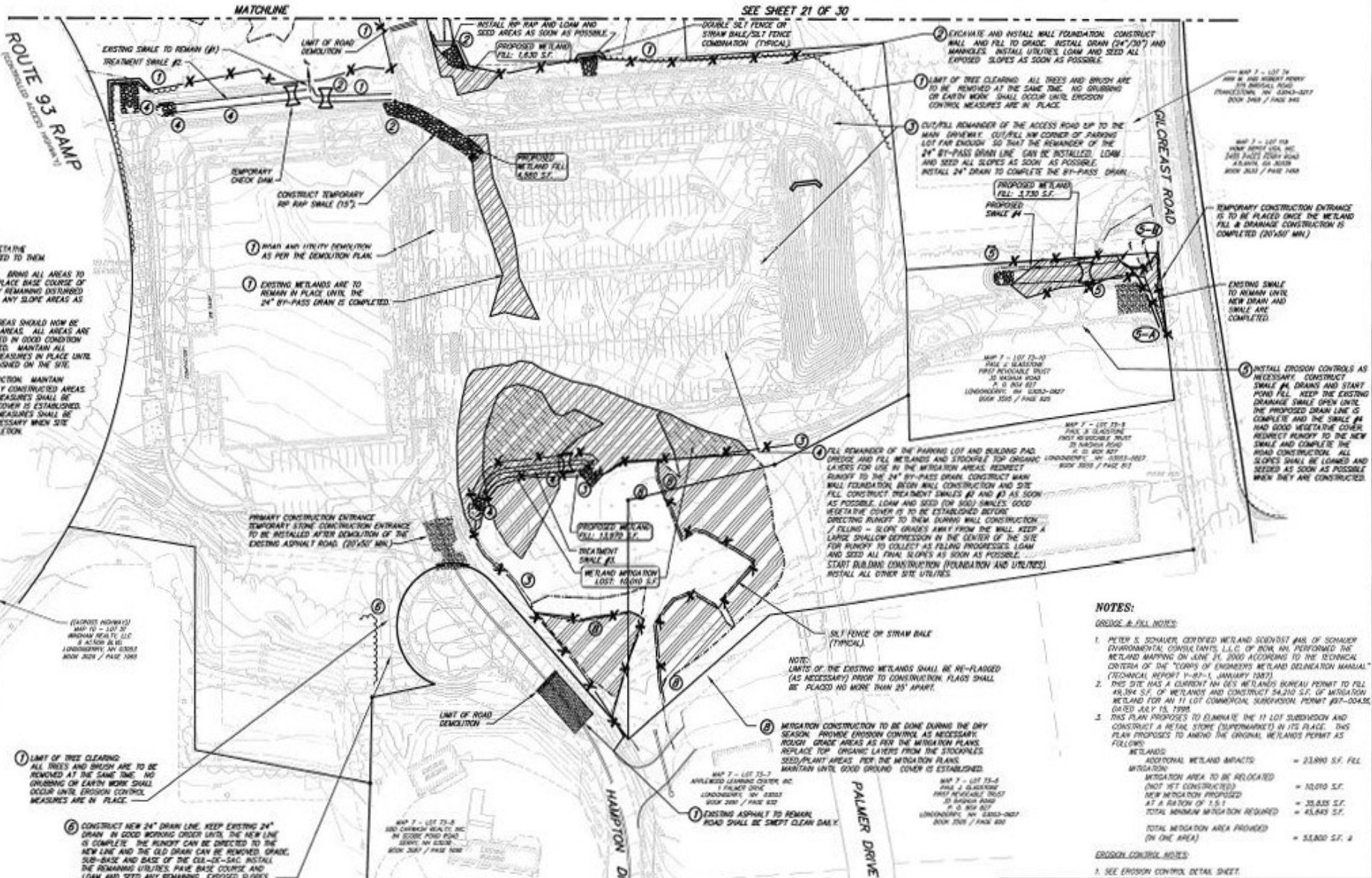
PREPARED FOR:
HANNAFORD BROS. CO.
 P.O. BOX 1000
 PORTLAND, MAINE 04104

OWNER OF RECORD:
VICTORY REALTY CO. TRUST
 26 ORCHARD VIEW DRIVE
 LONDONDERRY, N.H. 03055

SCALE: 1" = 50'
 0 50 100 150 200

JULY 28, 2000

PREPARED BY:
Cuoco & Cormier
 CIVIL ENGINEERS — LAND SURVEYORS
 115 WASHINGTON ST., SUITE 100
 PORTLAND, ME 04101-2001
 TEL: 603-875-1100 FAX: 603-875-1101



NOTE: GRAVEY ARE TO HAVE GOOD VEGETATIVE COVER BEFORE RUNOFF IS DIRECTED TO THEM.

- 1. INSTALL ALL REMAINING UTILITIES. BRING ALL AREAS TO FINAL GRADE AS NECESSARY. PLACE BASE COURSE OF ASPHALT. LOAM AND SEED ANY REMAINING DISTURBED AREAS. INSPECT AND RE-SEED ANY SLOPE AREAS AS NECESSARY.

ALL RUNOFF FROM THE PAVED AREAS SHOULD NOW BE DIRECTED TO INSIDE TREATMENT AREAS. ALL AREAS ARE TO BE INSPECTED AND MAINTAINED IN GOOD CONDITION UNTIL THE BUILDING IS COMPLETED. MAINTAIN ALL TEMPORARY EROSION CONTROL MEASURES IN PLACE UNTIL GOOD GROUND COVER IS ESTABLISHED ON THE SITE.

COMPLETE THE BUILDING CONSTRUCTION. MAINTAIN (INSPECT AND CLEAN) ALL NEWLY CONSTRUCTED AREAS. TEMPORARY EROSION CONTROL MEASURES SHALL BE REMOVED WHEN GOOD GROUND COVER IS ESTABLISHED. PERMANENT EROSION CONTROL MEASURES SHALL BE CLEANED AND REPAIRED AS NECESSARY WHEN SITE CONSTRUCTION IS NEARLY COMPLETE.

- 1. LIMIT OF TREE CLEARING: ALL TREES AND BRUSH ARE TO BE REMOVED AT THE SAME TIME. NO GRUBBING OF EARTH WORK SHALL OCCUR UNTIL EROSION CONTROL MEASURES ARE IN PLACE.

- 6. CONSTRUCT NEW 24" DRAIN LINE. KEEP EXISTING 24" DRAIN IN GOOD WORKING ORDER UNTIL THE NEW LINE IS COMPLETE. THE RUNOFF CAN BE DIRECTED TO THE NEW LINE AND THE OLD DRAIN CAN BE REMOVED. GRADE SUB-BASE AND BASE OF THE C&G-S&C. INSTALL THE REMAINING UTILITIES. PAVE BASE COURSE AND LOAM AND SEED ANY REMAINING EXPOSED SLOPES.

NOTE: LIMITS OF THE EXISTING METLANDS SHALL BE RE-FLAGGED (AS NECESSARY) PRIOR TO CONSTRUCTION. FLAGS SHALL BE PLACED NO MORE THAN 25' APART.

- 2. MITIGATION CONSTRUCTION TO BE DONE DURING THE DRY SEASON. PROVIDE EROSION CONTROL AS NECESSARY. ROUGH GRADE AREAS AS PER THE MITIGATION PLANS. REPLACE TOP ORGANIC LAYERS FROM THE STOCKPILES. SEED/PLANT AREAS PER THE MITIGATION PLANS. MAINTAIN UNTIL GOOD GROUND COVER IS ESTABLISHED.

- 7. EXISTING ASPHALT TO REMAIN. ROAD SHALL BE SWEPT CLEAN DAILY.

NOTES:
EROSION & FILL NOTES:

- PETER S. SCHWARTZ, CERTIFIED METS AND SOILSIST ANAL OF SCHWARTZ ENVIRONMENTAL CONSULTANTS, L.L.C. OF NEW HAMPSHIRE PERFORMED THE METLAND MAPPING ON JUNE 21, 2000 ACCORDING TO THE TECHNICAL CRITERIA OF THE "GUIDE OF ENGINEERS METLAND DELINEATION MANUAL" (TECHNICAL REPORT 11-87-1, JANUARY 1987).
- THIS SITE HAS A CURRENT NEW HAMPSHIRE BUREAU PERMIT TO FILL 48,194 S.F. OF METLANDS AND CONSTRUCT 54,210 S.F. OF MITIGATION METLAND FOR AN 11 LOT COMMERCIAL SUBDIVISION. PERMIT #07-00406, DATED JULY 15, 1998.
- THIS PLAN PROPOSES TO ELIMINATE THE 11 LOT SUBDIVISION AND CONSTRUCT A RETAIL STORE (SUPERMARKET) IN ITS PLACE. THIS PLAN PROPOSES TO AMEND THE ORIGINAL METLANDS PERMIT AS FOLLOWS:

METLANDS	ADDITIONAL METLAND IMPACTS	MITIGATION
		MITIGATION AREA TO BE RELOCATED (NOT YET CONSTRUCTED)
		NEW MITIGATION PROPOSED
		AT A RATIO OF 1:1.1
		TOTAL MINIMUM MITIGATION REQUIRED
		45,843 S.F.
		TOTAL MITIGATION AREA PROPOSED (IN ONE AREA)
		55,800 S.F. ±

EROSION CONTROL NOTES:
1. SEE EROSION CONTROL DETAIL SHEET.

LEGEND:

- IRON PIPE
- DRILL HOLE
- STONE BOUND
- SURVEY BARS
- DRAIN MANHOLE
- SEWER MANHOLE
- CATCH BASIN
- UTILITY POLE
- UTILITY WIRE
- WATER WETTER PIT
- IRON
- WOOD
- PRE-WORKSHEET
- SPRINKLER FIRE MAIN
- BRICK WALL
- GRASS
- EXISTING EXPOSURE
- CONCRETE
- EDGE OF PAVEMENT
- EXISTING SET BACK LINE
- CONCRETE FIN
- BUILDING LINE
- RIGHT OF WAY LINE
- PROPERTY LINE
- EDGE OF WET
- APPROXIMATE WATER LINE
- APPROXIMATE DRAIN LINE
- APPROXIMATE SEWER LINE
- OVERHEAD WIRE
- NO PAV

SYMBOLS:

- STOCK PILE
- CONSTRUCTION GROUP NUMBER
- SILT FENCE
- DOUBLE SILT FENCE/STRAW BALE
- CATCH BASIN PROTECTOR
- CHECK DAM
- TABLE
- MITIGATION AREA FROM ORIGINAL APPROVAL (SILT TO BE DISCONTINUED)
- ADDITIONAL PROPOSED MITIGATION AREAS
- MITIGATION AREA FROM ORIGINAL APPROVAL (TO BE RELOCATED)
- PROPOSED METLAND FILL AREAS



NO.	DATE	DESCRIPTION	BY
1	2/26/02	EROSION IMPROVEMENTS HAMPTON/OLEAST	BCP
2	6/11/02	REUSE OWNER OF RECORD	BCP
3	8/26/01	REVISIONS	BCP
4	8/26/01	LOT LINE RELOCATION	BCP
5	3/07/01	ADD CONSTRUCTION ENTRANCES AND UTILITIES	BCP
6	1/26/01	PERMIT FOR TOWN COMMENTS	BCP
7	8/26/01	REVISED HAMPTON DRIVE P.O.D.	BCP

**MAP 7/LOT 73
DREDGE AND FILL/EROSION CONTROL PLAN (SHEET 1 OF 2)**

HANNAFORD SUPERMARKET
HAMPTON DRIVE
LONDONDERRY, NEW HAMPSHIRE

PREPARED FOR:
HANNAFORD BROS. CO.
P.O. BOX 1000
PORTLAND, MAINE 04104

DESIGNED BY:
Cuoco & Cormier
ENGINEERING ASSOCIATES, INC.
CIVIL ENGINEERS - LAND SURVEYORS

SCALE: 1" = 50'
JULY 20, 2000

DATE: 7/20/00











Questions?